

THRAIL-CWS2020 welded rail fixing clips are especially designed for light or heavy rail. They can be used to fix rails even on the narrowest steel beams. The great feature is that its washer with arc base keeps the bolts perpendicular when the clips are used to

fix various rails. This product is applicable to rails for the cranes without horizontal guide rollers.

SPECIFICATIONS

Max side load using grade 8.8 bolt . 120kN

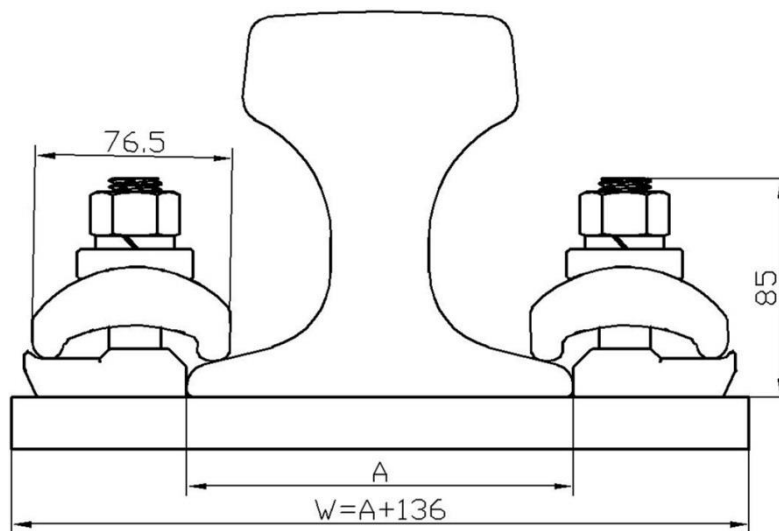
DIMENSIONS

TYPE	POST-INSTALLATION HEIGHT	WEIGHT
CWS2020	85mm	0.9kg

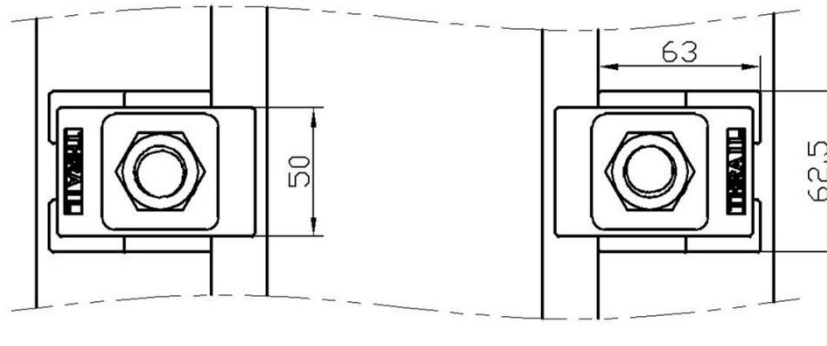
PRODUCT PERFORMANCE

It provides an optimized installation size. Once the weldable base has been welded to steel bottom soleplate, the washer, clip cap together with the weldable base are tightened by grade 8.8 bolt.

RAIL WITHOUT PAD



RAIL WITH PAD



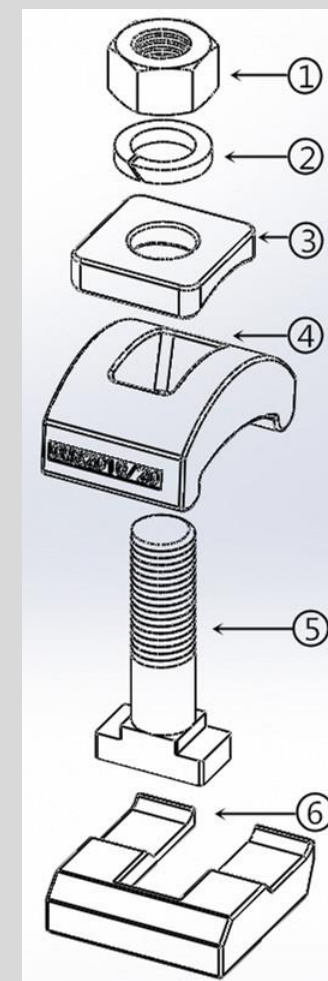
Minimum assembly width

$W = \text{Rail width (A)} + 136\text{mm}$

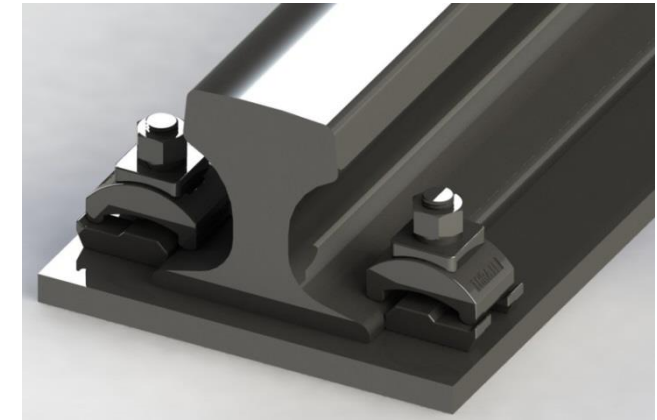
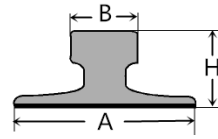
NOTE: For ground track with M20 anchor bolts $W = \text{Rail width (A)} + 150\text{mm}$

COMPONENTS

1. Nut
2. Spring washer
3. Special washer
4. Clip cap
5. M20 Captive bolt
6. Weldable base

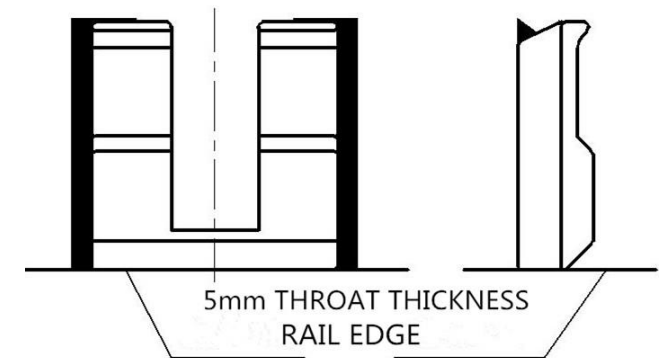


This clip can be used for a wider selection of rails than illustrated. Please contact THRAIL for the full range of possible rails. All rails can be fastened with bolted or welded base clips. THRAIL may change or improve their products and also alter specifications without notice.



RAIL TYPE	A mm	B mm	H mm	RAIL WITH PAD	RAIL WITHOUT PAD
38kg/m	114	68	134	Not applicable	THRAIL-CWS2020
43kg/m	114	70	140	Not applicable	THRAIL-CWS2020
50kg/m	132	70	152	Not applicable	THRAIL-CWS2020
QU70	120	70	120	Not applicable	THRAIL-CWS2020
QU80	130	80	130	Not applicable	THRAIL-CWS2020
QU100	150	100	150	Not applicable	THRAIL-CWS2020
QU120	170	120	170	Not applicable	THRAIL-CWS2020
A65	175	65	75	Not applicable	THRAIL-CWS2020
A75	200	75	85	Not applicable	THRAIL-CWS2020
A100	200	100	95	Not applicable	THRAIL-CWS2020
A120	220	120	105	Not applicable	THRAIL-CWS2020
S41	125	67	138	Not applicable	THRAIL-CWS2020
S49	125	67	149	Not applicable	THRAIL-CWS2020
89kgCR	178	102	114	Not applicable	THRAIL-CWS2020
MRS86	165	102	102	Not applicable	THRAIL-CWS2020
MRS87	152	102	152	Not applicable	THRAIL-CWS2020
MRS125	180	120	180	Not applicable	THRAIL-CWS2020
CR73	140	100	135	Not applicable	THRAIL-CWS2020
CR100	155	120	150	Not applicable	THRAIL-CWS2020
ISCR80	130	82	130	Not applicable	THRAIL-CWS2020
ASCE80	127	64	127	Not applicable	THRAIL-CWS2020
ASCE85	132	65	132	Not applicable	THRAIL-CWS2020
ISCOR48	127	68	150	Not applicable	THRAIL-CWS2020
ISCOR57	140	70	165	Not applicable	THRAIL-CWS2020
ISCR100	150	102	150	Not applicable	THRAIL-CWS2020
ISCR120	170	120	170	Not applicable	THRAIL-CWS2020
41kgAS	127	64	137	Not applicable	THRAIL-CWS2020
50kgAS	127	70	154	Not applicable	THRAIL-CWS2020
UIC54	140	70	159	Not applicable	THRAIL-CWS2020
UIC60	150	72	172	Not applicable	THRAIL-CWS2020
56 E 1	140	70	159	Not applicable	THRAIL-CWS2020

WELD INSTRUCTION



INSTALLATION INSTRUCTIONS

Weld all round the clip base with a 5mm throat thickness fillet weld, using low hydrogen electrodes. Recommended electrodes AWS E7018 or E7028. Clip base is made from weldable grade steel. Please consult THRAIL for guidance. TIGHTENING TORQUE 390Nm Please contact THRAIL, for full installation instructions.