

The THRAIL-BWD2020/43 adjustable rail fixing clip is specially designed for largest rail. Its greatest advantage is that it has a very low height after installation and it can help to fix the rail on the narrowest steel

girder. It can not only minimize installation cost, but also meet all usages of the cranes with horizontal guide rollers.

SPECIFICATIONS

Max side load using grade 8.8 bolt 235kN

20mm horizontal rail adjustment

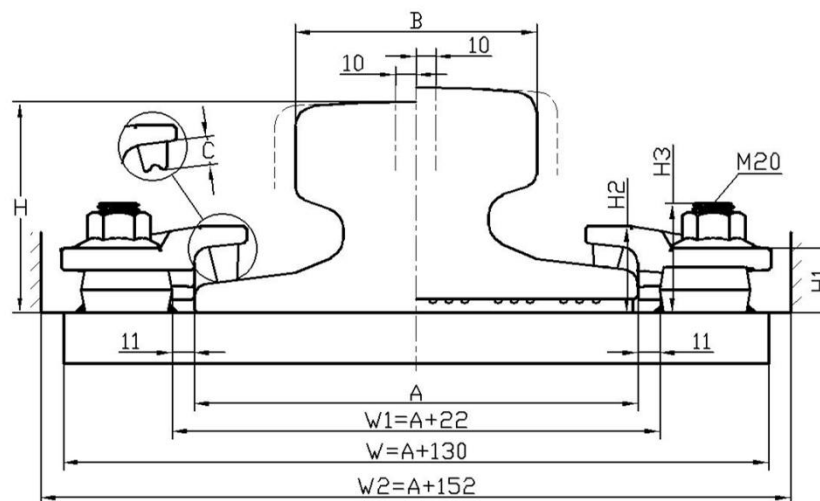
DIMENSIONS (mm)

TYPE	H1	H2	H3	ESTIMATED WEIGHT	
BWD2020/43	32	43	55	2.4kg	
Rubber block thickness	RAIL WITH PAD		RAIL WITHOUT PAD		
C	C1	10	C3	17	
	C2	14	C4	21	
BWD2020/43 comprises BWD2020 base and 9220/20/40 cap					

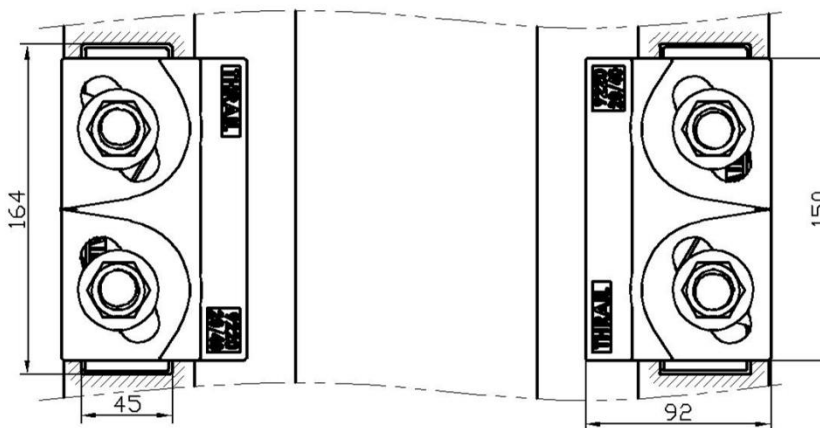
PRODUCT PERFORMANCE

1. It can be used for all kinds of cranes with or without guide rollers.
2. THRAIL rail clip is equipped with vulcanized integral rubber blocks. It can help reduce noise greatly and improve working environment while fastening rails.
3. The rail fixing clip has a self-locking mechanism which makes the clip locked automatically by the pitched clip cap and weldable base with wedge structure theory.
4. It provides an optimal installation size. It's no need to drill hole on the steel girder when installation. Also the bolts don't need to be threaded through the hole from beneath of the steel girder. Workers only need to weld the weldable base on the steel rail support. The two parts (clip cap and weldable base) are locked together with grade 8.8 bolt.

RAIL WITHOUT PAD



RAIL WITH PAD



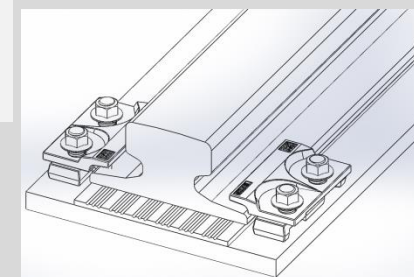
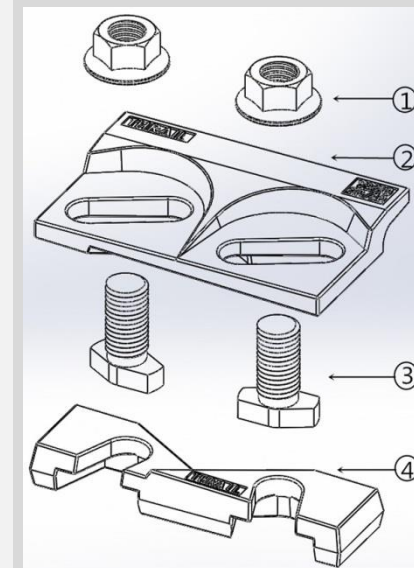
Minimum assembly width

W = Rail width (A) + 130mm W1 = Rail width (A) + 22mm
W2 = A + 152mm

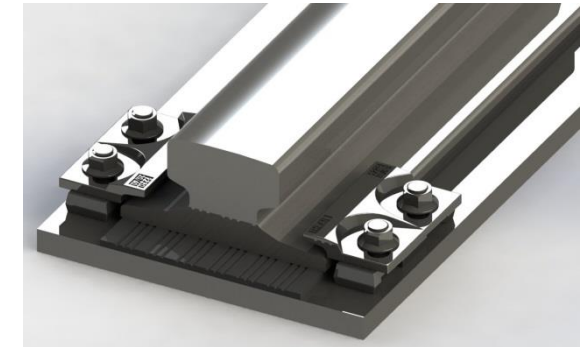
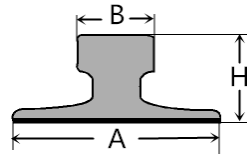
5. Rail fixing clip with vulcanized rubber blocks helps control the deviation between rail and crane girder. It can be installed easily with impact wrench. Moreover, it provides a great deal of convenience for rail installation and adjustment of the rail lateral movement.

COMPONENTS

1. Flange nut
2. Clip cap with integral rubber block
3. M20 Captive bolt
4. Weldable base

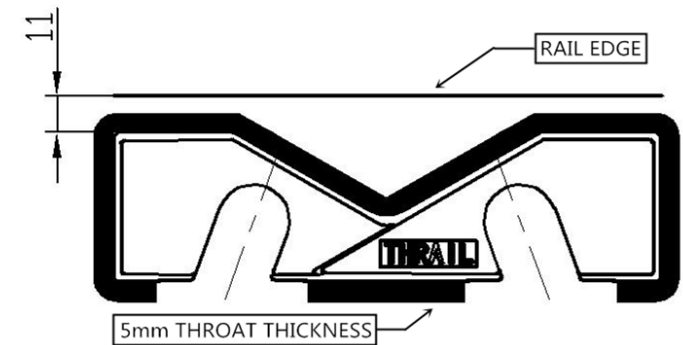


This clip can be used for a wider selection of rails than illustrated. Please contact THRAIL for the full range of possible rails. All rails can be fastened with bolted or welded base clips. THRAIL may change or improve their products and also alter specifications without notice.



RAIL TYPE	A mm	B mm	H mm	RAIL WITH PAD	RAIL WITHOUT PAD
QU100	150	100	150	BWD2020/43 (C2)	BWD2020/43 (C4)
QU120	170	120	170	BWD2020/43 (C1)	BWD2020/43 (C3)
A100	200	100	95	BWD2020/43 (C2)	BWD2020/43 (C4)
A120	220	120	105	BWD2020/43 (C2)	BWD2020/43 (C4)
A150	220	150	150	BWD2020/43 (C1)	BWD2020/43 (C3)
89kgCR	178	102	114	BWD2020/43 (C1)	BWD2020/43 (C3)
164kgCR	230	140	150	-	-
MRS86	165	102	102	BWD2020/43 (C2)	BWD2020/43 (C4)
MRS87A	152	102	152	BWD2020/43 (C1)	BWD2020/43 (C3)
MRS125	180	120	180	-	BWD2020/43 (C3)
MRS192	229	140	157	-	BWD2020/43 (C1)
MRS221	220	220	160	BWD2020/43 (C1)	BWD2020/43 (C3)
ISCR100	150	102	150	BWD2020/43 (C2)	BWD2020/43 (C4)
ISCR120	170	120	170	BWD2020/43 (C1)	BWD2020/43 (C3)
ISCR140	170	140	170	BWD2020/43 (C1)	BWD2020/43 (C3)
ISCR57	140	70	165	BWD2020/43 (C2)	BWD2020/43 (C4)
73kgAS	146	70	157	BWD2020/43 (C1)	BWD2020/43 (C3)
86kgAS	165	102	102	BWD2020/43 (C1)	BWD2020/43 (C3)
CR73	140	100	135	BWD2020/43 (C2)	BWD2020/43 (C4)
CR100	155	120	150	BWD2020/43 (C1)	BWD2020/43 (C3)

WELD INSTRUCTION



INSTALLATION INSTRUCTIONS

Weld all round the clip base with a 5mm throat thickness fillet weld, using low hydrogen electrodes. Recommended electrodes AWS E7018 or E7028. Clip base is made from weldable grade steel.
 * For rail without pad, weld closest to and parallel with the rail must be omitted. Please consult Gantrail for guidance.
 TIGHTENING TORQUE 350Nm
 Please contact GANTRAIL, for full installation instructions.